



REF: GVAE79

## Ideal student flat

Barcelona, Eixample

Furnished 3-bedroom apartment located in the Sagrada Familia neighborhood, near the Hospital de Sant Pau and the Universities @ 22. 2 double rooms with access to the terrace and an individual interior. The living room also has access to the terrace. It is a very sunny apartment and it has a lot of light. Very good communication with the L2 metro line and all the buses that pass through the streets of Valencia and Mallorca. The property has an elevator. The kitchen is fully equipped with fridge, washing machine and dishwasher. Of the 2 bathrooms, one has a shower and the other has a bathtub. Abstain students for short periods .....

## Data sheet

### Distribution

- Surface 81m2
- 3 rooms
- 2 baths
- Furnished
- Terrace 7m2
- Good condition

### Characteristics

- Heating
- Balcony
- All exterior
- Energy rating: D

### Additional Data

- Lift

## Global terms

The information on this website has been provided by third parties, as merely informative and is assumed correct. Glover Barcelona does not guarantee its veracity. The offer may be subject to inaccuracies, errors, unintentional omissions, price changes and / or withdrawal from the market without prior notice. Once the lease has been agreed upon, the agent's fees are charged to the lessee, these being 10% of an annuity of agreed rent, plus the corresponding VAT in force. The taxes corresponding to the rent, in particular the ITP are also at the expense of the lessee. Other particular conditions, such as duration, bond, guarantees, consumptions /

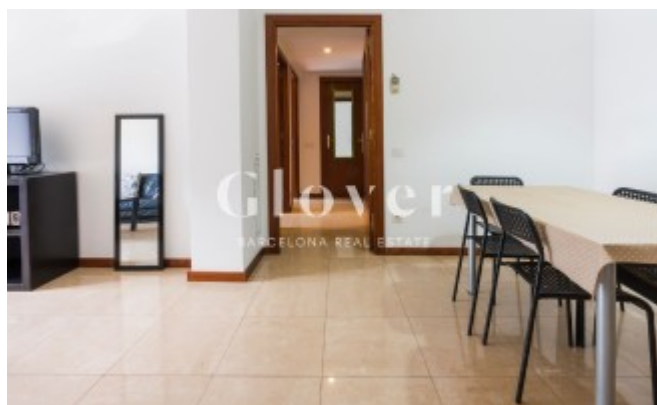
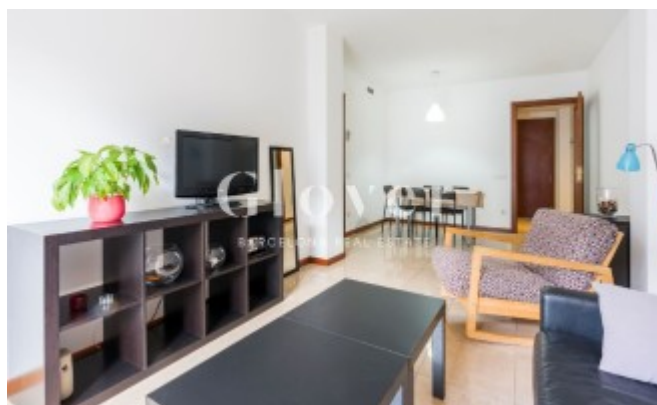
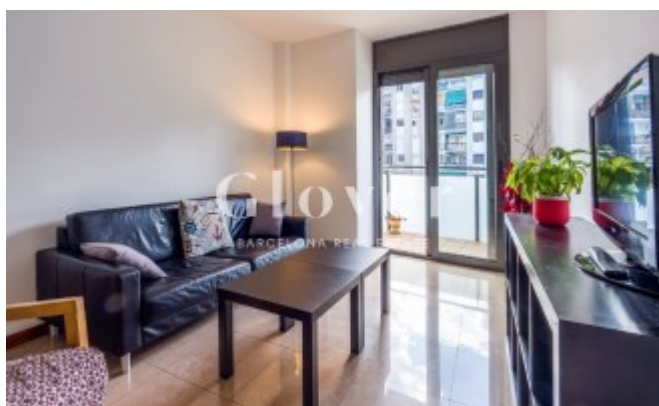
supplies or community expenses when they exist, will be agreed and specified in each specific case.

**Map:**

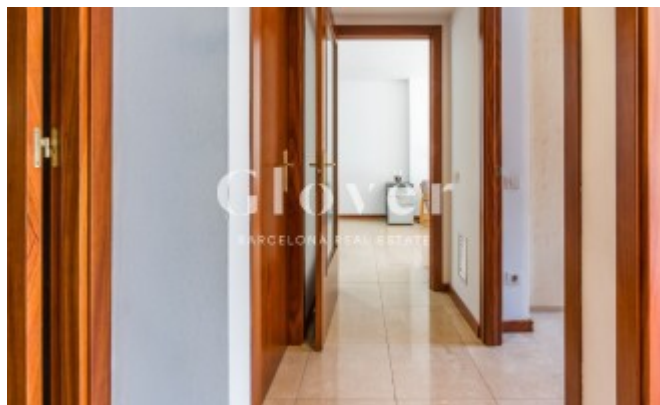
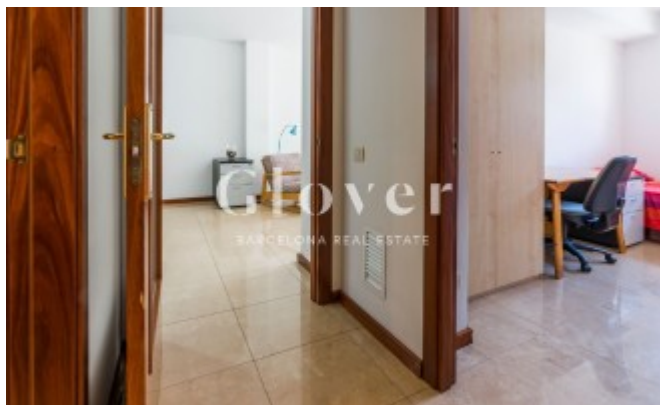
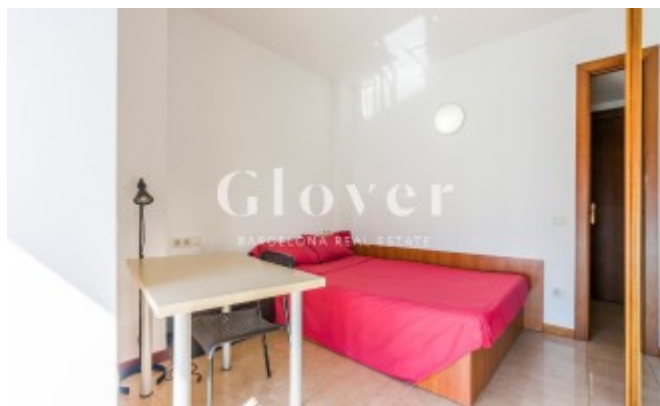
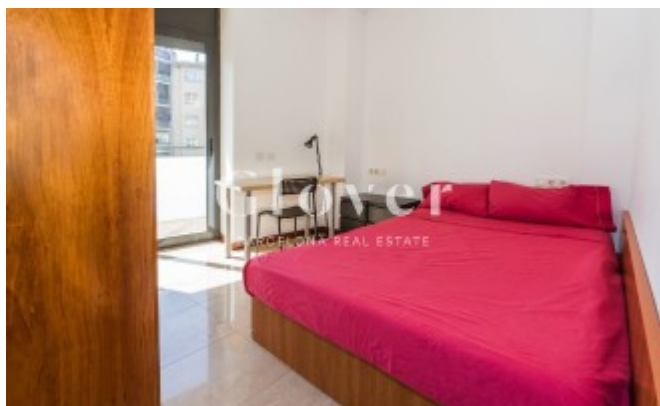
<https://www.google.com/maps/@41.4057,2.18247,16z?hl=en>

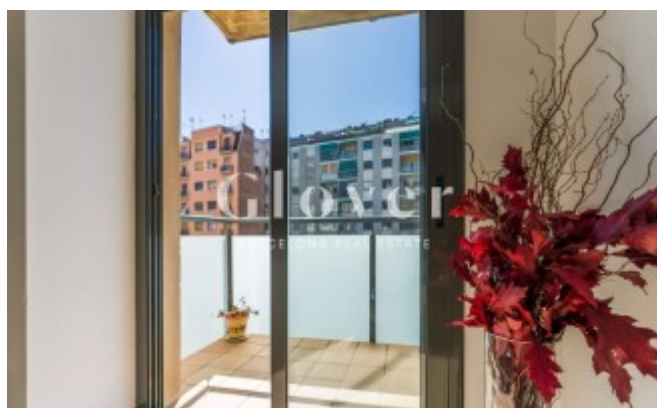
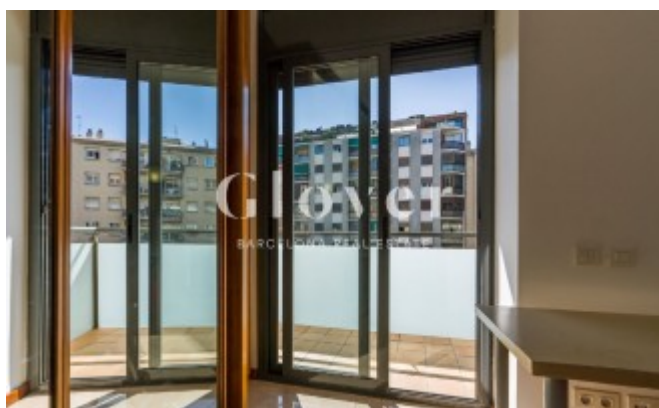
**Link:**

<https://dev.gloverbarcelona.com/en/properties/barcelona-eixample-ideal-student-flat-557>

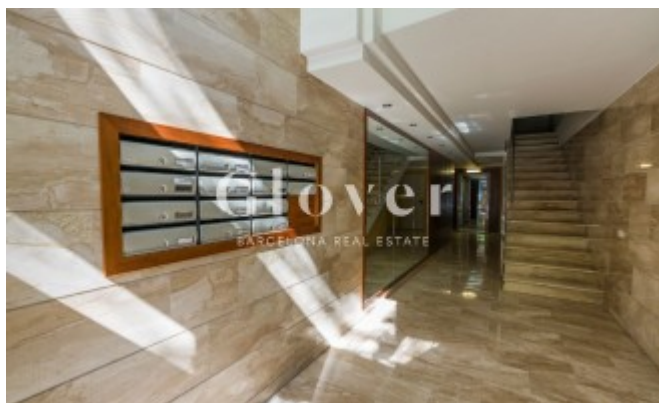












Área inferior  
2.4 €/m<sup>2</sup>

Índex  
13.83 €/m<sup>2</sup>

Àrea superior  
17.04 €/m<sup>2</sup>