



REF: GVAC59

Apartment for rent next to Plaça Camp

Barcelona, Sarrià - sant gervasi

The apartment is located in Sant Gervasi - La Bonanova district, next to Plaça Camp, well communicated with public transport. In this area, full of shops, services and schools, we find this apartment of approximately 60 sqm with terrace. This property has lots of natural light, exterior and calm. It consists of two rooms, one double room and the other one single (unfurnished) with wardrobes, a complete bathroom with a shower. It has as well an open kitchen with a water area and parquet. The estate has an elevator. It is ideal for having a pied a terre in the high area of Barcelona. The apartment can be rented with furniture.

Data sheet

Distribution

- Surface 61m2
- 2 rooms
- 1 bath
- Furnished
- Good condition

Characteristics

- Air conditioning
- Heating
- All exterior
- Energy rating: D

Additional Data

- Lift

Global terms

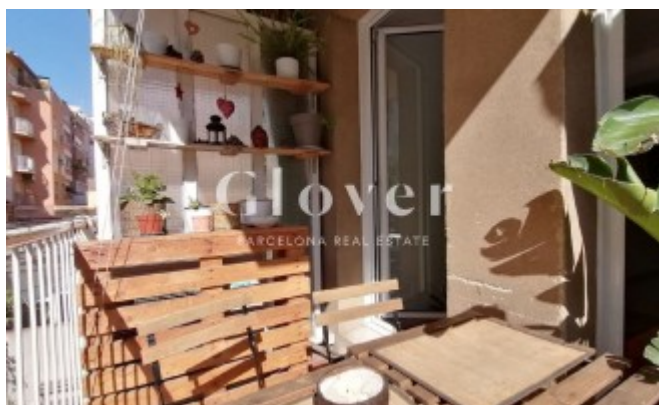
The information on this website has been provided by third parties, as merely informative and is assumed correct. Glover Barcelona does not guarantee its veracity. The offer may be subject to inaccuracies, errors, unintentional omissions, price changes and / or withdrawal from the market without prior notice. Once the lease has been agreed upon, the agent's fees are charged to the lessee, these being 10% of an annuity of agreed rent, plus the corresponding VAT in force. The taxes corresponding to the rent, in particular the ITP are also at the expense of the lessee. Other particular conditions, such as duration, bond, guarantees, consumptions / supplies or community expenses when they exist, will be agreed and specified in each specific case.

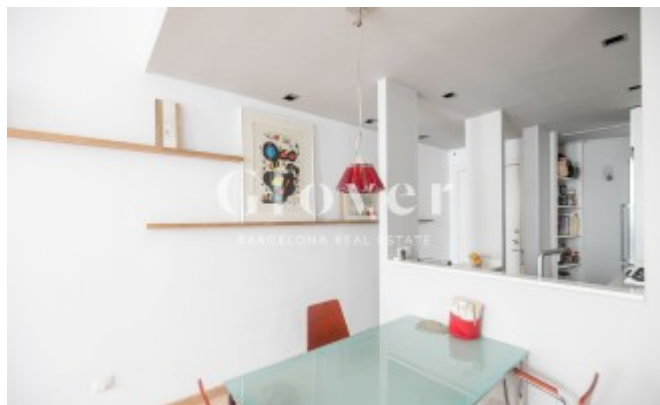
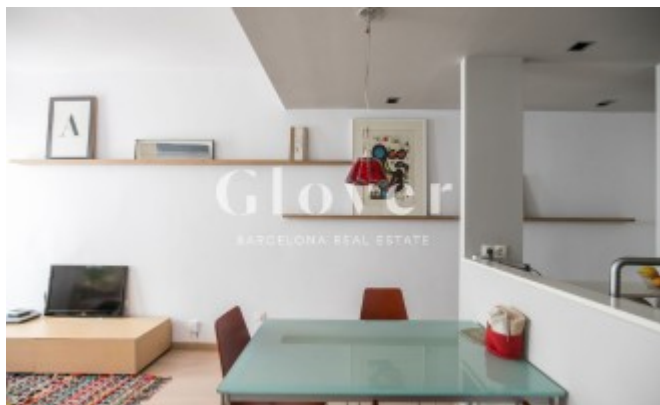
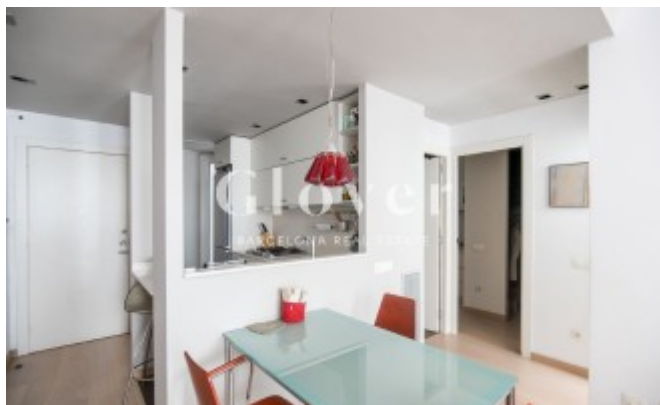
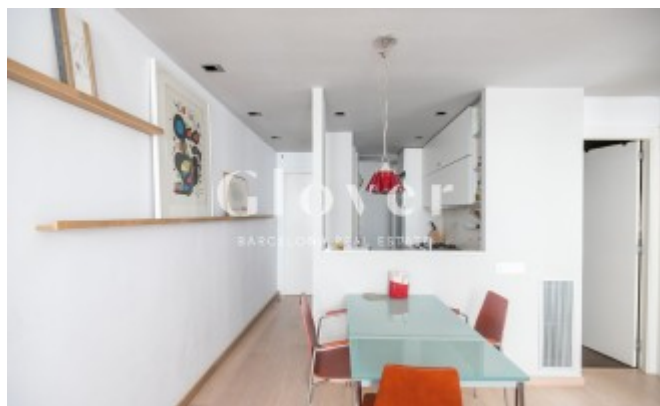
Map:

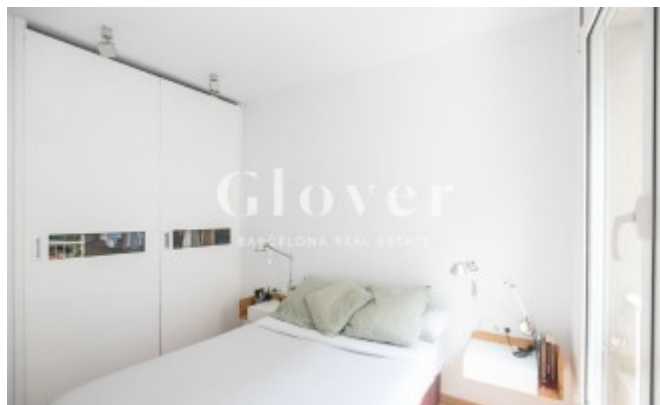
<https://www.google.com/maps/@41.4037,2.13578,16z?hl=en>

Link:

<https://dev.gloverbarcelona.com/en/properties/barcelona-sarria-sant-gervasi-apartment-rent-next-placa-camp-577>









Índex
17.06 €/m²

Àrea inferior
5.54 €/m²

Índex
17.06 €/m²

Àrea superior
22.88 €/m²