



REF: GVVD8

Magnificent penthouse for sale with tourist license

Barcelona, Eixample

We are pleased to present exclusively this magnificent penthouse for sale with tourist license.

It is a penthouse with 3 bedrooms and 1 bathroom with a large terrace of 43.50 m2. It consists of 71 m2 built interior plus the terrace. We highlight the views from the terrace to the beautiful park of Joan Miró. Living room with equipped kitchen. Of the 3 bedrooms, all with fitted closets, 1 is single and overlooks an inner courtyard. The other two are double and exterior. All share a bathroom with shower. Exterior carpentry of wood and aluminum depending on the area. Interior wood carpentry. Air conditioning by splits. Gas heating. Tiled floor. Orientation east / west. The property has a tourist license and has a very high occupancy. Very close to all kinds of public transport with easy access to the roads in and out of the city. In addition, it has all kinds of neighborhood stores, parks, hospitals and everything you need to live comfortably. If you want to be the privileged one to enjoy this unique piece in one of the most authentic neighborhoods of Barcelona call us or send us a WhatsApp to 681162903. Possibility of arranging visits for July 24 in the afternoon and July 25.

Data sheet

Distribution

- Surface 85m2
- 3 rooms
- 1 bath
- Furnished
- Terrace 43m2
- Good condition

Characteristics

- Air conditioning
- Heating
- Balcony
- All exterior
- Energy rating: G

Additional Data

- Lift
- Community expenses: 92 €/Monthly
- IBI expenses: 36,42 €/Monthly

Global terms

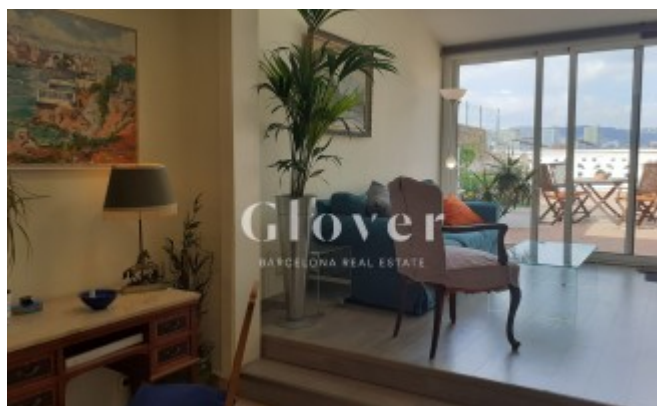
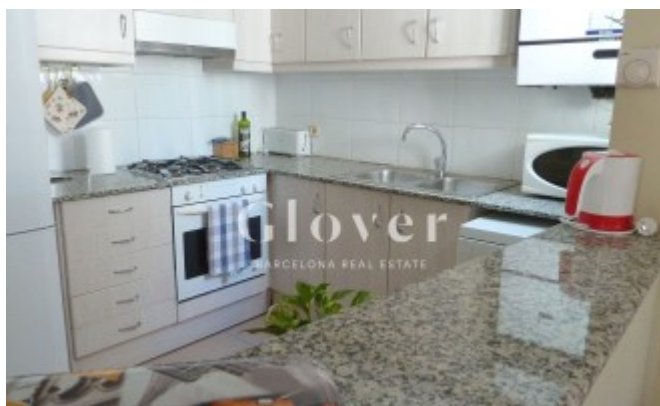
The information on this website has been provided by third parties, as merely informative and is assumed correct. Glover Barcelona does not guarantee its veracity. The offer may be subject to inaccuracies, errors, unintentional omissions, price changes and / or withdrawal from the market without prior notice. The expenses and taxes of transmission of the property, VAT or ITP, Notary and Registry are borne by the buyer. Agent fees are borne by the seller.

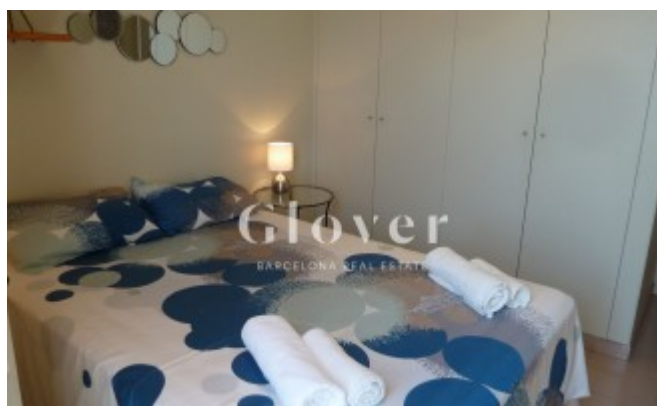
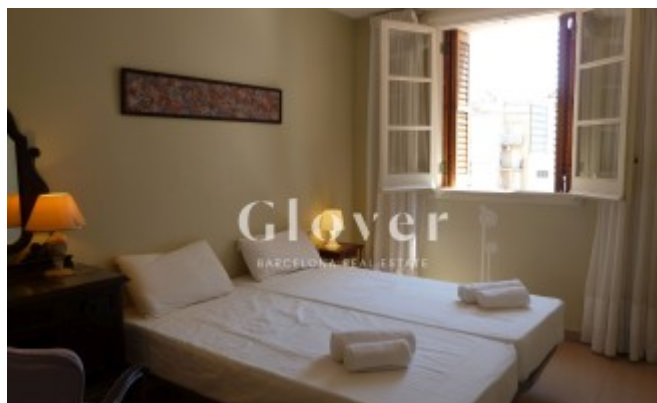
Map:

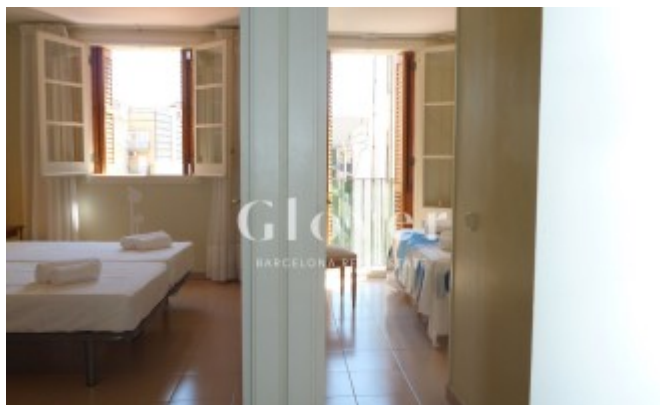
<https://www.google.com/maps/@41.3773,2.14986,16z?hl=en>

Link:

<https://dev.gloverbarcelona.com/en/properties/barcelona-eixample-magnificent-penthouse-sale-tourist-license-639>







SUPERFÍCIES			
DORMITORI	5,58 m²	COCINA	6,39 m²
DORMITORI	7,98 m²	SALA COMEDOR	11,71 m²
DORMITORI	6,13 m²	W.C.	1,12 m²
W.C.	2,83 m²	W.C.	2,83 m²
BANY	4,21 m²	BANY	4,21 m²
SUPERFÍCIE ÚTIL TOTAL		63,88 m²	
SUPERFÍCIE CONSTRUÏDA TOTAL		71,28 m²	

0	1	2	3	4	5	6	7	8	9	10	11	12	13	14	15	16	17	18	19	20	21	22	23	24	25	26	27	28	29	30	31	32	33	34	35	36	37	38	39	40	41	42	43	44	45	46	47	48	49	50	51	52	53	54	55	56	57	58	59	60	61	62	63	64	65	66	67	68	69	70	71	72	73	74	75	76	77	78	79	80	81	82	83	84	85	86	87	88	89	90	91	92	93	94	95	96	97	98	99	100
---	---	---	---	---	---	---	---	---	---	----	----	----	----	----	----	----	----	----	----	----	----	----	----	----	----	----	----	----	----	----	----	----	----	----	----	----	----	----	----	----	----	----	----	----	----	----	----	----	----	----	----	----	----	----	----	----	----	----	----	----	----	----	----	----	----	----	----	----	----	----	----	----	----	----	----	----	----	----	----	----	----	----	----	----	----	----	----	----	----	----	----	----	----	----	----	----	----	----	----	-----